

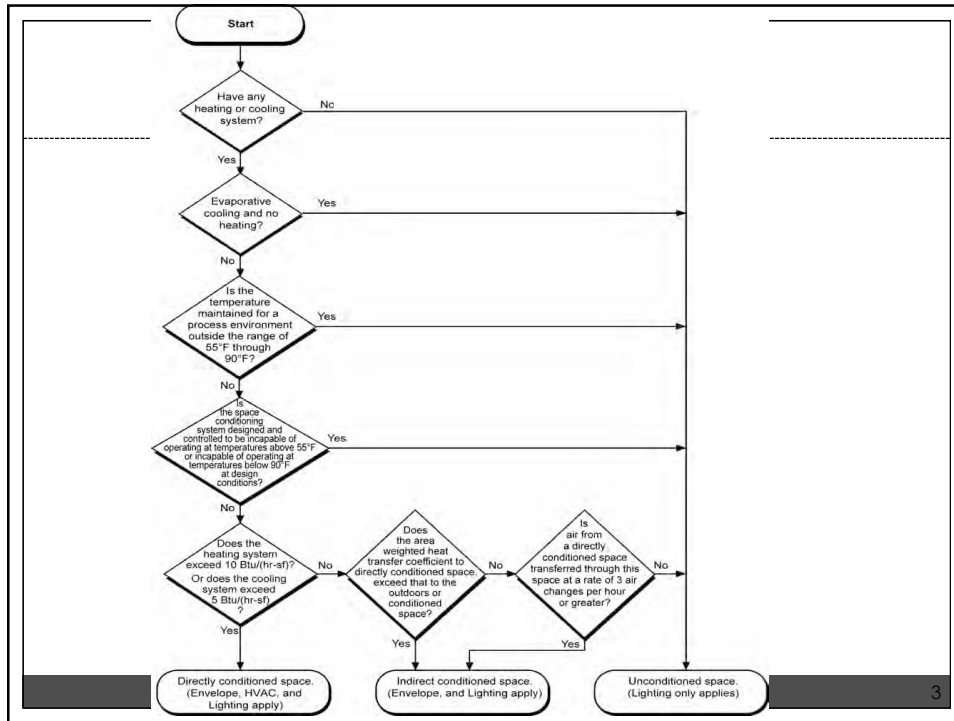
## Chapter 1 Clarifications

---

## Conditioned / Indirectly Conditioned / Unconditioned Space

---

Figure 1-1 page 1-18 in NonRes Manual provides best summary of when buildings have to comply with Standards. It is not explained in the text of the Manual. (You need to review the original to actually read it)



## Conditioned / Indirectly Conditioned / Unconditioned Space

In the Energy Standards (not the Manual) this is explained in Section 101 Definitions – but it is not summarized on one page.

## Directly Conditioned Space

---

Enclosed space that:

has mechanical heating with a capacity exceeding 10 Btu/(hr-sf),

or has mechanical cooling with a capacity exceeding 5 Btu/(hr-sf)

## Directly Conditioned Space

---

Directly Conditioned Space must comply with:

1. Envelope
2. HVAC
3. Lighting

		Cooling			
		None	Evaporative Cooling	$\leq 5$ Btu/(hr-s.f.)	$> 5$ Btu/(hr-s.f.)
Heating	None	Unconditioned		Conditioned	
	$\leq 10$ Btu/(hr-s.f.)	Unconditioned		Conditioned	
	$> 10$ Btu/(hr-s.f.)	Conditioned			

7

## Unconditioned Space

Unconditioned space is neither directly nor indirectly conditioned:

Lighting & Skylight Rules apply

8

## **PROCESS Spaces**

Less than 55° F

Greater than 90° F

Process space is considered Unconditioned Space: thus Lighting Only

## **PROCESS**

Unless the space conditioning system is designed and thermostatically controlled to maintain a process environment temperature less than 55° F or to maintain a process environment temperature greater than 90° F for the whole space that the system serves.

## **Computer or Similar Rooms**

If the heating and cooling equipment in the room is capable keeping the temperature between 55° F and 90° F, the space is conditioned and must comply with ALL of the requirements of the Energy Standards.